

# **FACULTY OF MEDICINE KMITL**

King Mongkut's Institute of Technology Ladkrabang

## **STUDENT HANDBOOK**

# Contents

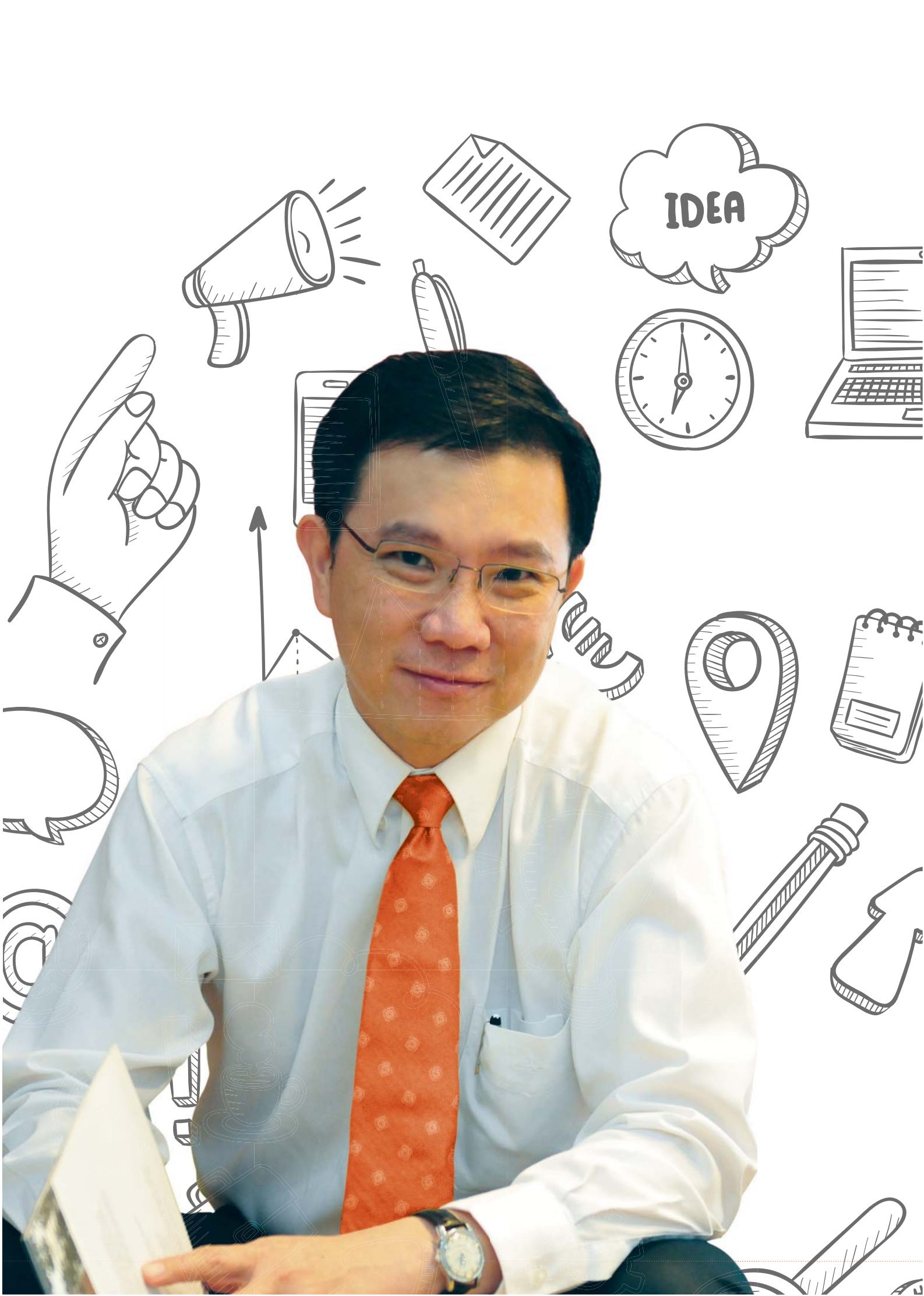
Welcome to the Faculty of Medicine	5
History of KMITL	6
Student Life	9
Library Service	10
Computer and The Internet Service	11
Student Dormitories	12
Health Center	13
Sport and Recreational Facilities	14
Student Clubs	15
Developing Minds	16
KMITL Core Values	17
Fight Song	18





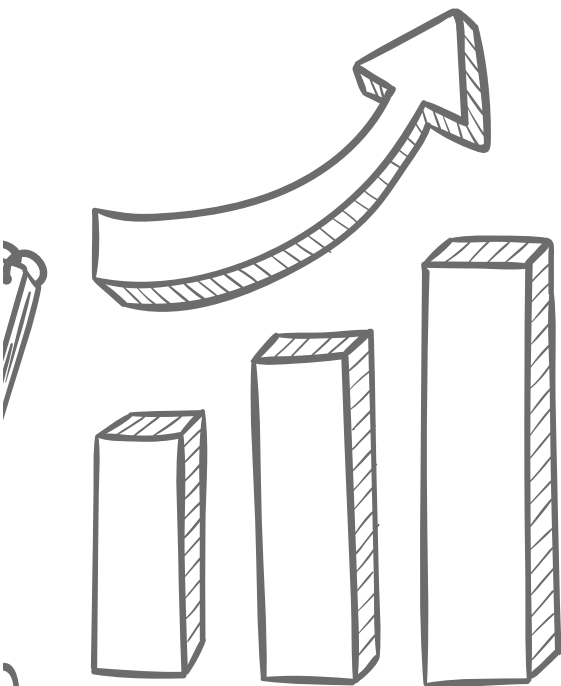








# Welcome to the newest chapter in your life!



It's an exciting time to be alive and to be a part of the only international medical school in Thailand, MD@KMITL. King Mongkut's Institute of Technology Ladkrabang is rich in heritage and culture. During your time at our program, we encourage you to explore our roots, learn our traditions and establish yourself as an integral member of our MD@KMITL community.

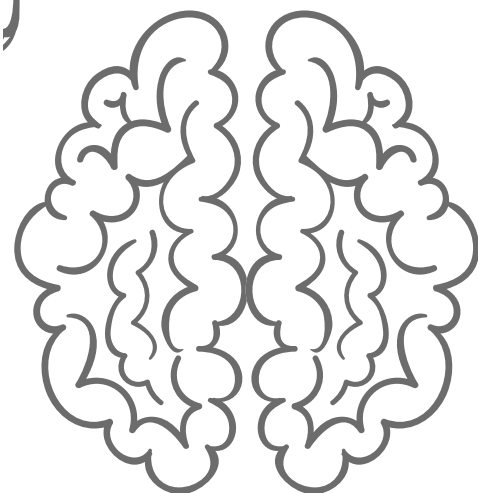
We are proud to have you and would like to instill our core values of:

1. Respect for yourself and others
2. Manners and Social Skills
3. Honesty and Integrity
4. Time and Organizational Skills
5. Leadership and Perseverance

On your journey to becoming Thailand's most capable 21st Century doctors, we support your every development and are looking forward to the day that you will give back to better our society as a whole.

Best of luck and have fun!

Prof. Dr. Anan Srikiatkhachorn  
Dean  
Faculty of Medicine  
KMITL



# History of KMITL



The establishment of the Nondhaburi Telecommunication Training Center on August 24, 1960 with academic cooperation from the Government of Japan marked the origination of KMITL. The training center became the Nondhaburi Institute of Telecommunications under the Colombo Plan, later in 1964.

As specified by the 1971 King Mongkut's Institute of Technology Act, KMITL was originated by an amalgamation of three technical colleges: Nondhaburi Institute of Telecommunications, North Bangkok Technical College and Thonburi Technical College. In the same year, the Nondhaburi Institute of Telecommunications, or known as King Mongkut's Institute of Technology at Nondhaburi Campus, was relocated to the district of Ladkrabang in Bangkok. The new campus was called "Chao Khun Taharn Ladkrabang Campus". The Nondhaburi Institute of Telecommunications became the Faculty of Engineering in 1972. In the same year, the College of Design and Construction located at the Bangplad district was transformed into the Faculty of Architecture affiliated with KMITL.

In 1986, KMITL became a legitimate public university under a legislation called "King Mongkut's Institute of Technology Ladkrabang Act", which regulates its governance, administration and operation. Like other public universities in Thailand, KMITL is a government agency,





under the supervision of the former Ministry of University Affairs, which was merged with the Ministry of Education on July 7, 2003. At present, KMITL, like other public or autonomous universities, is under the supervision of the Commission on Higher Education affiliated with the Ministry of Education.

The name of the institute was derived from the name of King Rama IV. The royal grand crown seal has been graciously used as the emblem of the institute. The name “Chao Khun Taharn” has been used in honor of Chao Phya Surawong Waiyawat (Won Boonnak) of whom the heiress, Liam Prot Pitaya Payat, donated her own land to establish the institute. In 1977, the Faculty of Industrial Education and Science was established for offering fundamental courses for all faculties and for providing education and promoting research in science. In 1979, the Chao Khun Taharn Agricultural College, which was affiliated with the Department of Vocational Education, Ministry of Education, was transferred to KMITL, and became the Faculty of Agricultural Technology. The Computer Research and Service Center and the School of Graduate Studies were founded in 1981 and 1986, respectively. In 1988, the Faculty of Industrial Education and Science was separated into two faculties: the Faculty of Industrial Education and the Faculty of Science. In 1991, the Central Library was founded. In 1995, KMITL opened its first remote campus

in Chumphon Province with 1,800 hectares of land in order to support the development of industry in the southern part of Thailand.

As information technology is of vital importance in our increasingly globalized and competitive world, in 1996, the Faculty of Information Technology was founded with the aim to provide higher education and research programs in information technology. In 2000, the department of Agricultural Industry within the Faculty of Agricultural Technology was endorsed to become the Faculty of Agroindustry.

Moreover, there are several academic collaborations between King Mongkut’s Institute of Technology Ladkrabang and the Japanese government since the signing of Memorandum of Understanding (MOU) in 1960, such as the following examples;

#### **Collaboration 1: December 12, 1978**

The agreement of Japanese technical cooperation in the fields of computer, solid-state electronics and electrical engineering was signed. This is the initiation of establishment of Electronics Research Center in Faculty of Engineering today.



#### **Collaboration 2: December 15, 1987**

The agreement of Japanese technical cooperation in the fields of telecommunications, broadcasting, data communication and mechanical engineering in the period 1988 - 1993 was signed so that many Japanese experts were dispatched to KMITL for the collaborative researches. This also becomes the initiation of faculty and students exchange program between KMITL and official/private organizations in Japan.

#### **Collaboration 3: October 1, 1992**

The agreement of cooperation for Pan-Pacific Regional Telecommunications Network Experiment and Research by Satellite between KMITL and the Ministry of Posts and Telecommunications of Japan (MPT), known as the 'PARTNERS' project, was signed. This project carried out international experiments using satellite communications, organized by MPT, with the collaboration from Japan institutions such as National Institute of Information and Communications Technology (NICT) (formerly Communications Research Laboratory, CRL), National Space Development Agency (NASDA) and National Institute of Multimedia Education (NIME). The project was successfully concluded at the end of March 1996. The new POST-PARTNERS was soon to follow in order to promote international cooperation for space activities and to support scholars working in fields of education, health, and environment surveillance. Though the POST-PARTNERS project was successfully terminated in March 2002, but the networking of international linking on research and development in these areas is still active.

#### **Collaboration 4: July 25, 1997**

The agreement of technical cooperation for the establishment of the Research Center for Communications and Information Technology (ReCCIT) was signed. Through the collaboration from Japanese Government for ReCCIT was successfully terminated in September 2002, but ReCCIT becomes one of the research centers of excellence of KMITL today in major fields of information and communication technology.

In 2007, two new research centers of excellence, specifically on nanotechnology and data storage technology, have been founded with collaboration from National Science and Technology Development Agency (NSTDA), Ministry of Science and Technology (MOST) of Thailand. The mission of the centers is to provide higher education and advance research and knowledge in their related technical areas.

Since the establishment of KMITL in 1960, the grand exhibitions of research and development of KMITL had been organized 5 times, in June 1976, June 1983, June 1987, July 1996 and November 2006. Their Majesties the King and Queen and Her Royal Highness Princess Maha Chakri Sirindhorn graciously opened these grand exhibitions and shown their most attention on the various research and development results of KMITL.





## Student Life

Majorly having been responsible for livings of the students and the personnel of the institution, King Mongkut's Institute of Technology Ladkrabang maintained policies of services to them all such as health service, health center, and sports center, etc. to make the living of students and personnel better. All services must be reached at ease.



## LIBRARY SERVICE



One of the most important services is library service. Students and people of KMITL could reach the service to gain educational knowledge with convenient library activities. Library services must be a significant source of student knowledge and education services; books, educational media, and more must be served at ease, as well.

Some useful information of the Central Library could be briefly displayed

- Service areas of 10,000 sq.m.
- 4-storey building
- 1000 seats for library activities

### Examples of Central Library Services

- General information library resources and services
- WebOPAC General Information search service
- Lending-returning services of general information library resource
- Lending-returning services of general information library resources of other domestic universities
- Delivery service of books and journals inside the campus
- Internet services of Central Library
- Services for small group seminars
- Orientation through Library services
- Searching service for outside general information via VPN (KMITL SSL)

- Library service of the His Majesty the King Rama IV Honorable Hall
- Service of the His Majesty the King Rama IV Honorable Memorandum Hall
- Library service of exhibition rooms
- Service of Visual Innovations
- Service of True Vision Cable TV
- Services of Visual Media Displayer
- Lending-Returning services of Visual Media
- And more ...

### Available Library Service Time

- *On Regular Semester days*  
Monday - Friday at 08:30 A.M. to 08:00 P.M.  
Saturday-Sunday at 09:00 A.M. to 05:00 P.M.
- *On Regular Midterm – Final Examination days*  
Monday - Friday at 08:30 A.M. to 10:00 P.M.  
Monday - Friday at 08:30 A.M. to 10:00 P.M.
- *On Regular Major Educational Holiday*  
Monday - Friday at 08:30 A.M. to 04:30 P.M.  
Saturday - Sunday Closed.

### Contact

For more information, please feel free to contact the Call Center at 02 - 7373000 ext. 5082, 5084, 5079



## COMPUTER AND THE INTERNET SERVICES

Modern computer and internet services become essential sources for the lives of learning. KMITL has acknowledged the essential of such the services and has provided choices of the services covering the campus. Major services of such the servings could be campus networks, wireless LAN, Wi-Fi, and others to be served covering the major points. The central computer and network services could be provided to be covered all major buildings and service activities. The services could be reached at Central Library, Faculties, Offices, Dormitories, and more covering areas to be educationally and recreationally served.

The Office of Computer Service Center of KMITL has educationally provided computers and high speed networks including with Wi-Fi and access points covering major areas to the campus. The students and people of the campus can educationally utilize the 24/7 services both inside and outside the campus with ease. Moreover, Computer Service Center has been serving the users with sufficient extra educational computer rooms and licensed computer applications. The users could be able to educational use with 24/7 services. Additionally, special training of computer courses or activities could be utilized at the supplied computer rooms.



## STUDENT DORMITORIES



Dormitories appear to be optionally necessary for students having home very far away from KMITL. However, anyone living in dormitory must strictly follow the regulations of the institutional dormitories for the fact that safety must be one of the first important educational conditions.

KMITL dormitory service becomes one of the major services to be accommodated to the students as the welfare of the campus. Dormitory service is under the management of the Division of Student Affairs, Office of the Rector. One who educationally uses the service could be accommodated with ease at economical rate and safety.

### **Regularly, KMITL students of the following required specifications are able to be accepted:**

1. Being the present students of KMITL
2. Monetary condition of poverty
3. Students of physical disability, congenital health problems (with medical confirmation letter) are to be advantageously approved first.
4. Others (as appropriate requirements of the institute's discretions) Official application could be personally done at the offices of students affairs of the individual faculty of the students.

### **Supplementary official documents required for the application:**

- 1 Legal photo of 1x1 inch size
- 1 copy of census record certification
- 1 official medical certificate (in case of congenital health problem)

### **Eligible students of approval would be reported at:**

- Dormitory Office
- Student Affairs Offices of all individual students' faculties
- The 1th Floor of Krom Luang Narathiwat Ratchanakarin Building

For the Student dormitory fees and more details, please feel free to contact The Student Affairs, Division of Student Affairs, the Office of The Rector;  
Tel. 02-737300 ext. 3330, 3635 3330, and 3635



# HEALTH CENTER

Health affair is under management of the Faculty of Medicine, KMITL. Health services are to be provided for students and people of the campus to be beneficial for sanitary health taking care of the communities. The activities are placed to monitor the protection and guidance to students about health taking care of themselves and the communities to complete both healthy physical, emotional and social minds. It becomes the service to the students and communities to have no or less illnesses for the vision that students or people of health would not be undermined by any sickness. Health office could be the beneficial welfare unit for the students and the people of the campus to take care of their health problems. For the major fact that the people of good health must be successful in their educational activities and in their daily lives as well.

## Official Regulations for the Health Service

- Be present KMITL students could identify the student IDs and service requirement to the counter service officers on the official service times.
- The KMITL personnel could identify KMITL officer ID and service requirement to the counter service officers on the official service times.
- For medicine requirement on special activities, the letter with the notification of date, time, location, and number of people must be delivered to the administrative to be approved by the vice president of Student Affair, Division of Student Affairs, 4th floor of Krom Luang Narathiwat Ratchanakarin Building at least 3 days in advance.
- In Case of psychiatrist consulting, advance appointment must be presented at Health Office, Floor 1 of Royal Princess Sirinthorn Building at official times.

## Official Service Times

- Extension of the medical examination times are provided Monday - Friday at 09:00 A.M to 06:00 P.M. (Educational Official Days Only).
- General Health Examination Monday - Friday at 09.30 - 11.00 A.M. , 11.30 A.M. - 02.00 P.M. (Educational official days only)
- Psychiatrist examination; Tuesday and Wednesday 04.00 P.M. - 06.00 P.M.

Note: Only the present KMITL students and the personnel of the institution could be served.



## Services

- Currently provide health inspection and treatment services
- Fundamental pharmaceutical services
- Psychiatry services
- Provide medical information about disease prevention, and promote health taking care
- Health inspection and medical certificate issuing
- Published medical information
- Pharmaceutical services for student activities both internal and external of KMITL
- Others health problem services such as wound care, eye wash, eye drops, injections, wound thread cutting, pock cutting, nail cutting, removing unknown materials from the body, etc.
- Cooperation with other nearby local medical centers in case that patients must be taken to be treated.
- Coordinating with external health units for annual health service providing to the people of the Institute
- Training the students and personnel of the Institute about beneficial knowledge of basic first aid
- In case of serious illness with proper rest requirement, medical room and bed with private condition must be served with close supervision of professional nurses at all times.

For more information, please feel free to reach or contact at 0-2326-4387 ext. 3633, 3634.

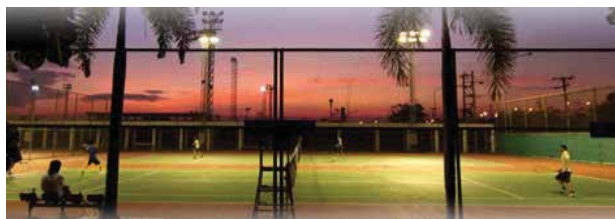
## SPORTS AND RECREATIONAL FACILITIES

Having recognized the essential of exercise facilities, King Mongkut's Institute Of Technology Ladkrabang has provided the KMITL Sports Centers to the students and also to the personnel of the Campus to have their favorable exercises. The activities of exercised could be that of fitness, swimming, tennis, badminton, football, basketball, and so on. Under the management of the Division of Student, King Mongkut's Institute Of Technology Ladkrabang, some details of the provided exercise facilities could be briefly described as follows:-



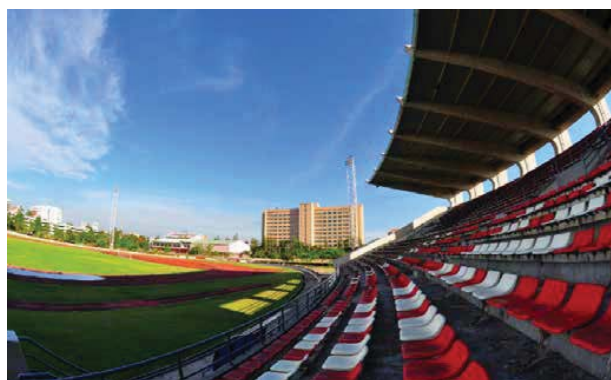
### Sport Center 2

Gymnasium of 500-seat building providing standard rugby football field with necessary competition equipment, inside the 500-seat gym building, there would be provided with the rooms for athletes, and referees.



### Sport Center 3

Gymnasium Hall 1 providing 2 valley ball courts, 1 basketball court.



### Sport Center 1

Gymnasium of 3,000-seat building providing standard football field, synthetic rubber track for running or walking exercises, 2 Takraw courts, inside the 3000-seat gym building, there would be provided with 4 rooms for athletes, referees, medical care, and meeting.



### Sport Center 4

Gymnasium Hall 2 providing 9 badminton courts, 5 table tennis courts.



### Sport Center 5 and 6

Providing 4 outdoor tennis courts.





### **Sport Center 8 and 9**

Providing Recreation Park, leisure garden corners for the students and others to have their relaxing exercise and rests. King Rama IV Park becomes one of them to be served such the peaceful activities.

### **Sport Center 7**

Providing the Royal Princess Sirindhorn Swimming Pool.



## **STUDENT CLUBS**

Many student clubs become the groups of students joining the common extra activities beneficial for socials of the campus. The students joining the activities could be learnt how to deal with people effectively and could be helpful for the practical classes as well.

### **Student Organizations, Student/Officer Clubs, and Student Congregations**

#### **Student Organizations**

- Student Organizations
- Student organization of Engineering Faculty
- Student organization Engineering Faculty (continued program)
- Student organization of Science Faculty
- Student organization of Faculty of Information Technology
- Student organization of Faculty of Agriculture industry

#### **Student and Officer Clubs**

- Student club of Buddhism and Thai Culture
- Student club of Northeast Art and Culture
- Student club of Ethical and Virtue Development
- Student club of Muslim Student Association
- Student club of Northerner
- Student club of Educational Development and Human Relationship Club
- Student club of Internet
- Student club of Amateur Radio
- Student club of Football

- Officer club of Football
- Student club of Basketball
- Student club of Volleyball
- Student club of Softball
- Student club of Pétanque
- Student club of Table Tennis
- Student club of Rugby
- Student club of Karatedo
- Student club of Judo
- Student club of Amateur boxing
- Student club of Development Volunteer
- Student Congregation of Public Relation and Personality Development

#### **Student Congregations**

- Student Congregation of Music of Engineering Faculty
- Student Congregation of Music of Science Faculty
- Student Congregation of Electronics
- Student Congregation of Computer
- Student Congregation of Photograph
- Student Congregation of Public Relation and Personality Development
- Student Congregation of Telecommunication of Engineering Faculty
- Student Congregation of Robot of Faculty of Engineering
- Student Congregation of Development Volunteer of Education Science

## DEVELOPING MINDS

King Mongkut's Institute of Technology Ladkrabang has always fostered the development of minds to students and personnel of the institution by providing the great changes of moral/virtue Buddhism and other religion activities. Many moral/virtue activities have been coped with. Many clubs of developing minds could be the ones of moral/virtue activity performances the members could be acting their moral/virtue lives and also could be working in groups with moral/virtue minds.

The Institute cooperating with assembles/clubs have been arranging the virtue/moral activities throughout the regular semesters such as that of giving food to monks on New Year day. Moreover, many events of such the moral activity have also been arranged on many important Buddhism occasions. Giving food activity regularly has always been performed on every Thursday morning on the regular semesters. Such the activities become attractively faithful for the students and other people of the Institute and many of them eventually join such the events.

Some clubs/associations of the Institute have arranged the Buddhism activities of occasional Ordination. Anyone interested in the ordination must be strictly trained on disciplines of Buddhism both on theories and practices. Anyone having been joining such the moral Buddhism activity could gain benefit to self and also to parents. They could react their gratitude to their parents and also beneficial for selves through the practical meditation. Acceptably, meditation has been approved to be helpful for better concentration on actual studies and consequently for better educational grades as well.

### **Student Clubs related to Mind Development activities**

- Student club of Buddhism and Thai Culture
- Student club of Northeast Art and Culture
- Student club of Ethical and Virtue Development
- Student club of Muslim Student Association





## KMITL CORE VALUES:

1. **K** - Knowledge
2. **M** - Morals
3. **I** - Integrity
4. **T** - Technology
5. **L** - Leadership



# Faculty of Medicine, KMITL FIGHT SONG

Fight on, fight on and cheer for Medicine  
We are the future, we are the next GEN  
Research, innovation and technology,  
We'll do great things that will impact History  
With every step we search for cures and hope  
KMITL will conquer all  
So, let's go out and help out all our friends  
And we'll shout out the battle cry of Medicine  
Medicine  
GO Med GO!







A large, stylized graphic on the left side of the page, composed of numerous orange dots arranged in a pattern that creates a sense of depth and movement, resembling a funnel or a series of concentric, overlapping circles.

# FACULTY OF MEDICINE KMITL



**FACULTY OF MEDICINE**

King Mongkut's Institute of Technology Ladkrabang  
Chalongkrung Road, Ladkrabang, Bangkok Thailand 10520  
Tel: +66 (0) 2329 8000 Ext. 2311 or 2307 Fax: +66 (0) 2329 8000 Ext. 2309  
[md.kmitl.ac.th](http://md.kmitl.ac.th)